

SITE LOCATION MAP
SCALE: 1" = 2,000'

Legend

- Duke Property Boundary
- Waste Boundary
- Monitoring Well
- Topographic Contour
- Review Boundary
- Compliance Boundary
- Compliance Boundary Coincident with Property Line
- Inactive Ash Basin, Structural Fill or Ash Storage

NOTES:

PARCEL DATA FOR THE SITE WAS OBTAINED FROM GASTON COUNTY GEOGRAPHIC INFORMATION SYSTEMS (GIS) DEPARTMENT (OCTOBER 2008) AND IS APPROXIMATE.

WASTE BOUNDARY IS APPROXIMATE.

MONITORING WELL LOCATIONS PROVIDED BY DUKE.

TOPOGRAPHY DATA FOR THE SITE WAS OBTAINED FROM NCDOT GEOGRAPHIC INFORMATION SYSTEMS (GIS) DEPARTMENT WEB SITE.

ORTHO-PHOTOGRAPHY WAS OBTAINED FROM NC ONEMAP (FLY DATE, 2007).

THE COMPLIANCE BOUNDARY IS ESTABLISHED ACCORDING TO THE DEFINITION FOUND IN 15A NCAC 02L .0107 (a).

THE REVIEW BOUNDARY IS ESTABLISHED ACCORDING TO THE DEFINITION FOUND IN 15A NCAC 02L .0108.



NO	DATE	DESCRIPTION	BY
0	04/27/2009	RELEASED FOR SUBMITTAL TO INCENR	WWM

**ALLEN ASH BASIN
NPDES PERMIT NC0004979
WASTE, REVIEW, AND COMPLIANCE BOUNDARY
DUKE ENERGY - ALLEN STEAM STATION
GASTON COUNTY, NORTH CAROLINA**

DRAWN BY:	CHECKED BY:
R. POWERS	WWM
DESIGNED BY:	APPROVED BY:
	LTA
PROJECT NO:	DATE:
1411-08-092	04/27/2009
SCALE:	DATE:
1"=300'	04/27/2009
DRAWING:	OF:
1	1



SITE LOCATION MAP
SCALE: 1" = 2000'

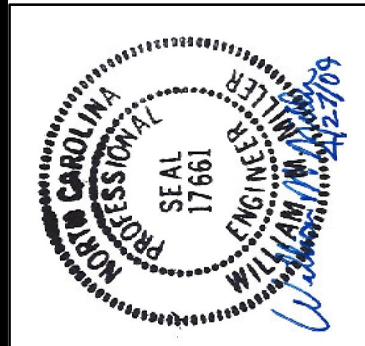


300 150 0 300 600 900 1,200 Feet

Legend

- Duke Property Boundary
- Waste Boundary
- Monitoring Well
- Topographic Contour
- Review Boundary
- Compliance Boundary
- Compliance Boundary Coincident with Property Line
- Ash Landfill Facility Boundary
- Structural Fill

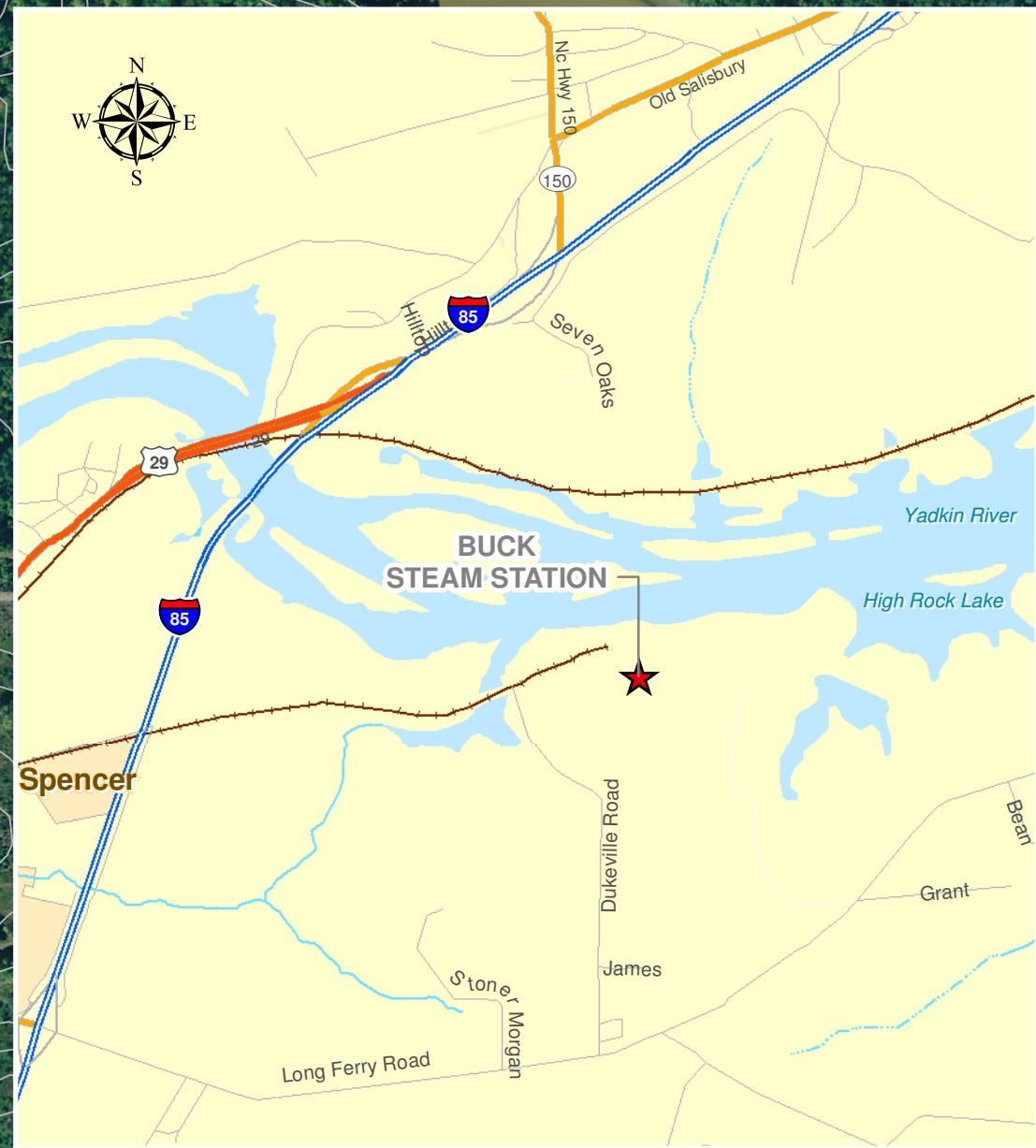
NOTES:
 PARCEL DATA FOR THE SITE WAS OBTAINED FROM STOKES COUNTY GEOGRAPHIC INFORMATION SYSTEMS (GIS) DEPARTMENT (OCTOBER 2008) AND IS APPROXIMATE.
 WASTE BOUNDARY IS APPROXIMATE.
 MONITORING WELL LOCATIONS PROVIDED BY DUKE.
 TOPOGRAPHY DATA FOR THE SITE WAS OBTAINED FROM NCDOT GEOGRAPHIC INFORMATION SYSTEMS (GIS) DEPARTMENT WEB SITE.
 ORTHO-PHOTOGRAPHY WAS OBTAINED FROM NC AERIALS EXPRESS (FLY DATE , MARCH 2006).
 THE COMPLIANCE BOUNDARY IS ESTABLISHED ACCORDING TO THE DEFINITION FOUND IN 15A NCAC 02L .0107 (a).
 THE REVIEW BOUNDARY IS ESTABLISHED ACCORDING TO THE DEFINITION FOUND IN 15A NCAC 02L .0108.



NO.	DATE	DESCRIPTION	BY
0	04/27/2009	RELEASED FOR SUBMITTAL TO NCCENR	WMM

**BELEWS CREEK ASH BASIN
 NPDES PERMIT NC0024406
 WASTE, REVIEW, AND COMPLIANCE BOUNDARY**
DUKE ENERGY - BELEWS CREEK STEAM STATION
 STOKES COUNTY, NORTH CAROLINA

DRAWN BY: R. POWERS	CHECKED BY: WMM
DESIGNED BY:	APPROVED BY: LTA
PROJECT NO: 1411-08-092	DATE: 04/27/2009
SCALE: 1"=300'	DATE: 04/27/2009
DRAWING: 1	OF: 1



SITE LOCATION MAP
SCALE: 1" = 3000'

YADKIN RIVER

BUCK STEAM STATION



COMPLIANCE BOUNDARY
REVIEW BOUNDARY

ACTIVE ASH BASIN
SECONDARY CELL

ACTIVE ASH BASIN
OLD PRIMARY CELL

ACTIVE ASH BASIN
ADDITIONAL
PRIMARY CELL

LEONARD ROAD

DUKEVILLE ROAD

LEONARD ROAD

LONG FERRY ROAD

LONG FERRY ROAD

SITE WATER WELL

MW-3S; MW-3D

MW-4S; MW-4D

MW-5S; MW-5D

MW-1S; MW-1D

MW-6S; MW-6D

Legend

- Duke Property Boundary
- Waste Boundary
- Monitoring Well
- Topographic Contour
- Review Boundary
- Compliance Boundary
- Compliance Boundary Coincident with Property Line

NOTES:

PARCEL DATA WAS OBTAINED FROM ROWAN COUNTY AND MONITORING WELL LOCATIONS WERE OBTAINED FROM DUKE ENERGY AND ARE APPROXIMATE.

WASTE BOUNDARY IS APPROXIMATE.

TOPOGRAPHY DATA FOR THE SITE WAS OBTAINED FROM ROWAN COUNTY GEOGRAPHIC INFORMATION SYSTEMS (GIS) DEPARTMENT WEB SITE.

ORTHO-PHOTOGRAPHY WAS OBTAINED FROM AERIALS EXPRESS (FLY DATE, MARCH 2007).

THE COMPLIANCE BOUNDARY IS ESTABLISHED ACCORDING TO THE DEFINITION FOUND IN 15A NCAC 02L .0107 (a).

THE REVIEW BOUNDARY IS ESTABLISHED ACCORDING TO THE DEFINITION FOUND IN 15A NCAC 02L .0108.



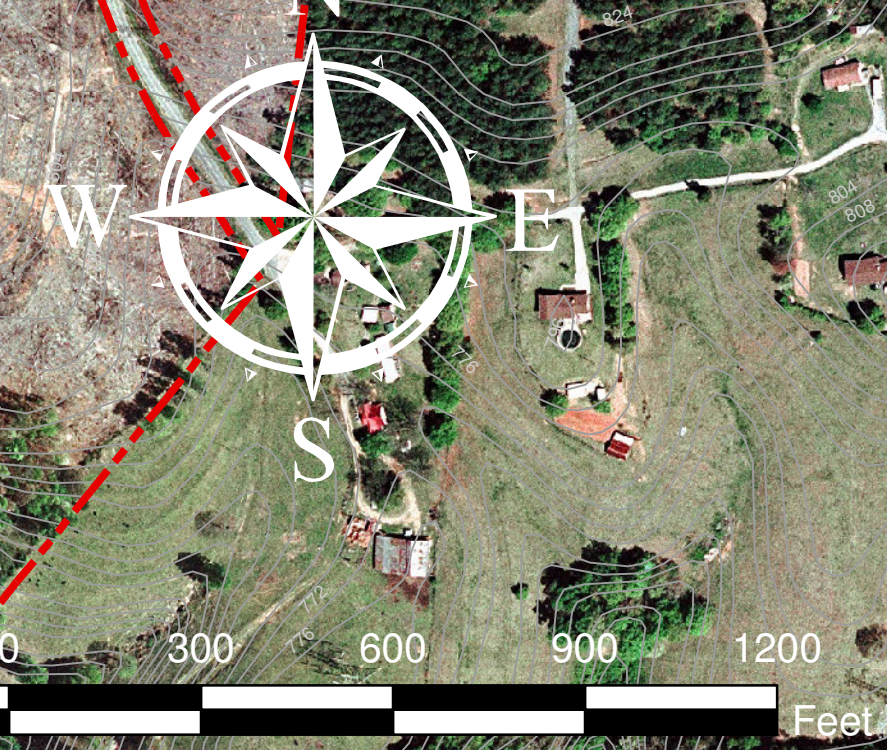
NO.	DATE	DESCRIPTION	BY
0	04/27/2009	RELEASED FOR SUBMITTAL TO INCENR	WMM

BUCK ASH BASIN
NPDES PERMIT NC0004774
WASTE, REVIEW, AND COMPLIANCE BOUNDARY
DUKE ENERGY - BUCK STEAM STATION
ROWAN COUNTY, NORTH CAROLINA

PROJECT NO:	1411-08-092
SCALE:	1"=300'
DATE:	04/27/2009
DRAWING:	1



SITE LOCATION MAP
SCALE: 1" = 8000'



Legend

- Duke Property Boundary from County GIS
- Waste Boundary
- Monitoring Well
- Topographic Contour
- Review Boundary
- Compliance Boundary
- Compliance Boundary Coincident with Property Line
- Inactive Ash Basin or Ash Storage Areas

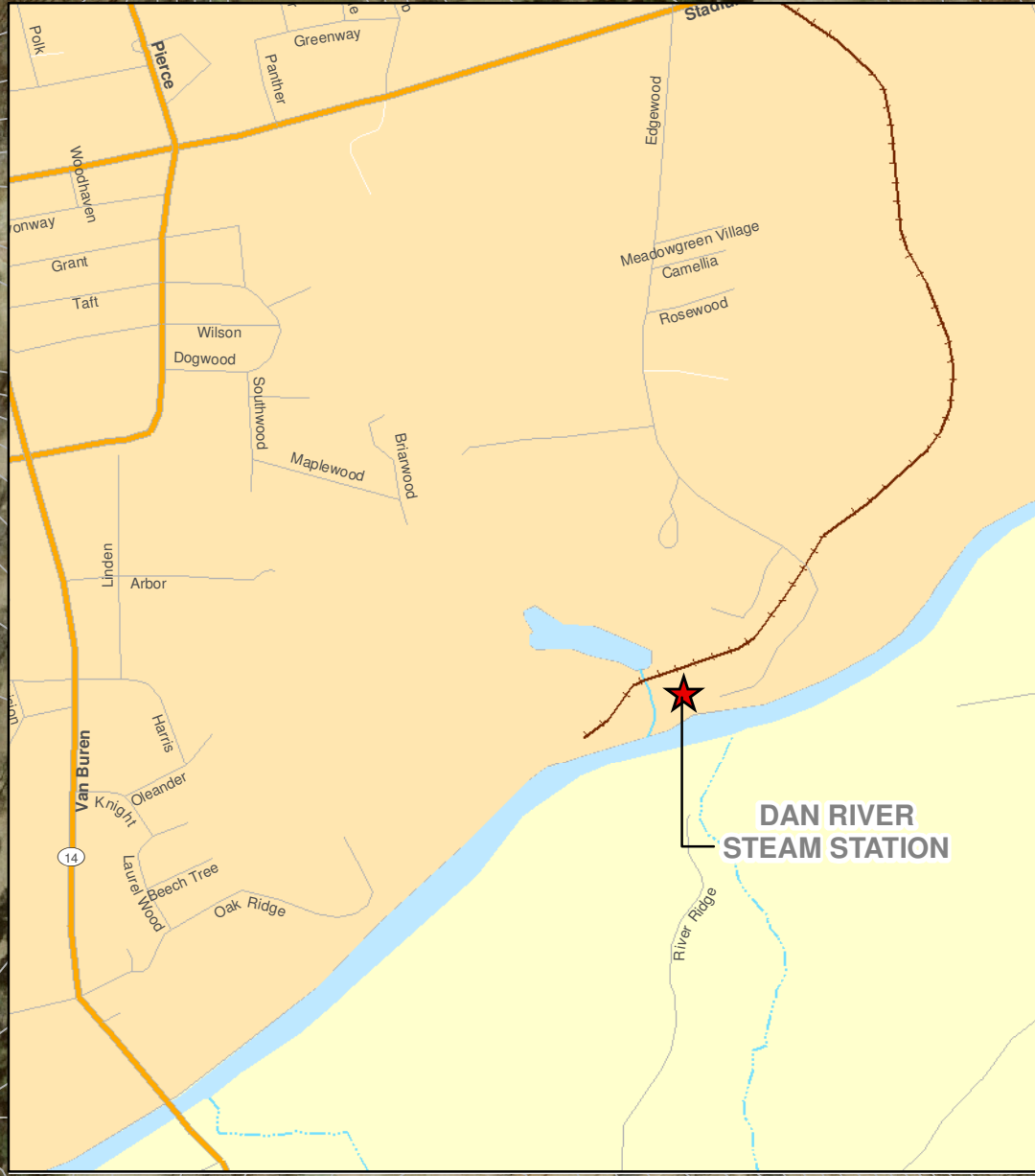
NOTES:
 PARCEL DATA FOR THE SITE WAS OBTAINED FROM CLEVELAND AND RUTHERFORD COUNTY GEOGRAPHIC INFORMATION SYSTEMS (GIS) DEPARTMENT (OCTOBER 2008 AND IS APPROXIMATE).
 WASTE BOUNDARY IS APPROXIMATE.
 MONITORING WELL LOCATION DATA PROVIDED BY DUKE.
 TOPOGRAPHY DATA FOR THE SITE WAS OBTAINED FROM NCDOT GEOGRAPHIC INFORMATION SYSTEMS (GIS) DEPARTMENT WEB SITE.
 ORTHO-PHOTOGRAPHY WAS OBTAINED FROM NC AERIALS EXPRESS (FLY DATE , JUNE 2007).
 THE COMPLIANCE BOUNDARY IS ESTABLISHED ACCORDING TO THE DEFINITION FOUND IN 15A NCAC 02L .0107 (a).
 THE REVIEW BOUNDARY IS ESTABLISHED ACCORDING TO THE DEFINITION FOUND IN 15A NCAC 02L .0108.



NO.	DATE	DESCRIPTION	BY
0	04/27/2009	RELEASED FOR SUBMITTAL TO NCDENR	WMM

**CLIFFSIDE ASH BASIN
 NPDES PERMIT NC0005088
 WASTE, REVIEW, AND COMPLIANCE BOUNDARY
 DUKE ENERGY - CLIFFSIDE STEAM STATION
 CLEVELAND COUNTY, NORTH CAROLINA**

DRAWN BY: R. POWERS	CHECKED BY: WMM
DESIGNED BY:	APPROVED BY: LTA
PROJECT NO: 1411-08-092	DATE: 04/27/2009
SCALE: 1"=300'	DATE: 04/27/2009
DRAWING: 1	OF: 1



SITE LOCATION MAP
SCALE: 1" = 2000'



NO.	DATE	DESCRIPTION	BY
0	04/27/2009	RELEASED FOR SUBMITTAL TO NCDENR	WMM

**DAN RIVER ASH BASIN
NPDES PERMIT NC0003468
WASTE, REVIEW, AND COMPLIANCE BOUNDARY
DUKE ENERGY - DAN RIVER STEAM STATION
ROCKINGHAM COUNTY, NORTH CAROLINA**

DRAWN BY: R. POWERS	CHECKED BY: WMM
DESIGNED BY:	APPROVED BY:
PROJECT NO: 1411-08-092	DATE: 04/27/2009
SCALE: 1"=200'	DATE: 04/27/2009
DRAWING: 1	OF: 1



Legend

- Duke Property Boundary
- Waste Boundary
- Monitoring Well
- Topographic Contour
- Review Boundary
- Compliance Boundary
- Compliance Boundary Coincident with Property Line
- Ash Storage Area

NOTES:

PARCEL DATA FOR THE SITE WAS OBTAINED FROM ROCKINGHAM COUNTY GEOGRAPHIC INFORMATION SYSTEMS (GIS) DEPARTMENT (OCTOBER 2008) AND IS APPROXIMATE.

WASTE BOUNDARY IS APPROXIMATE.

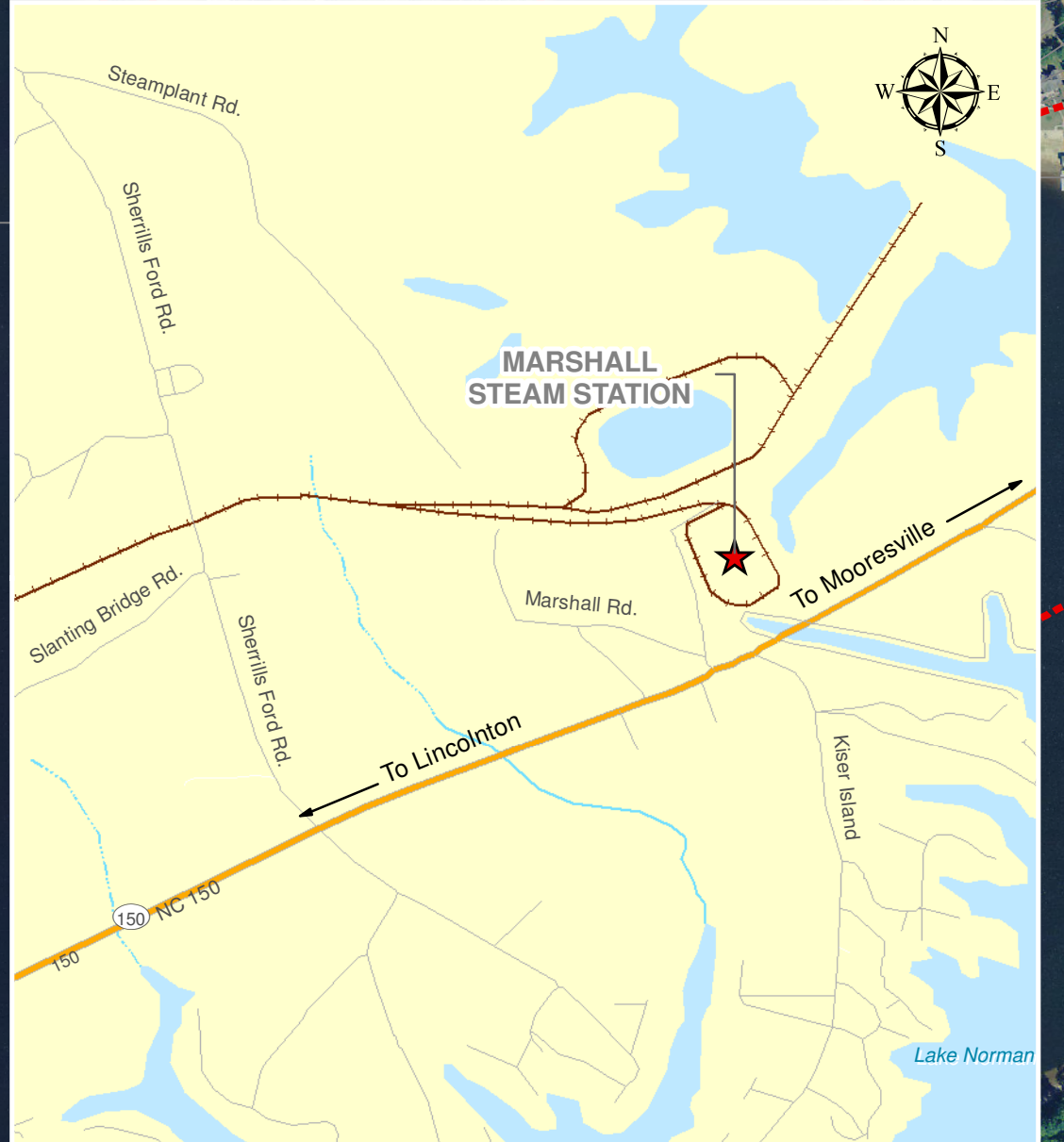
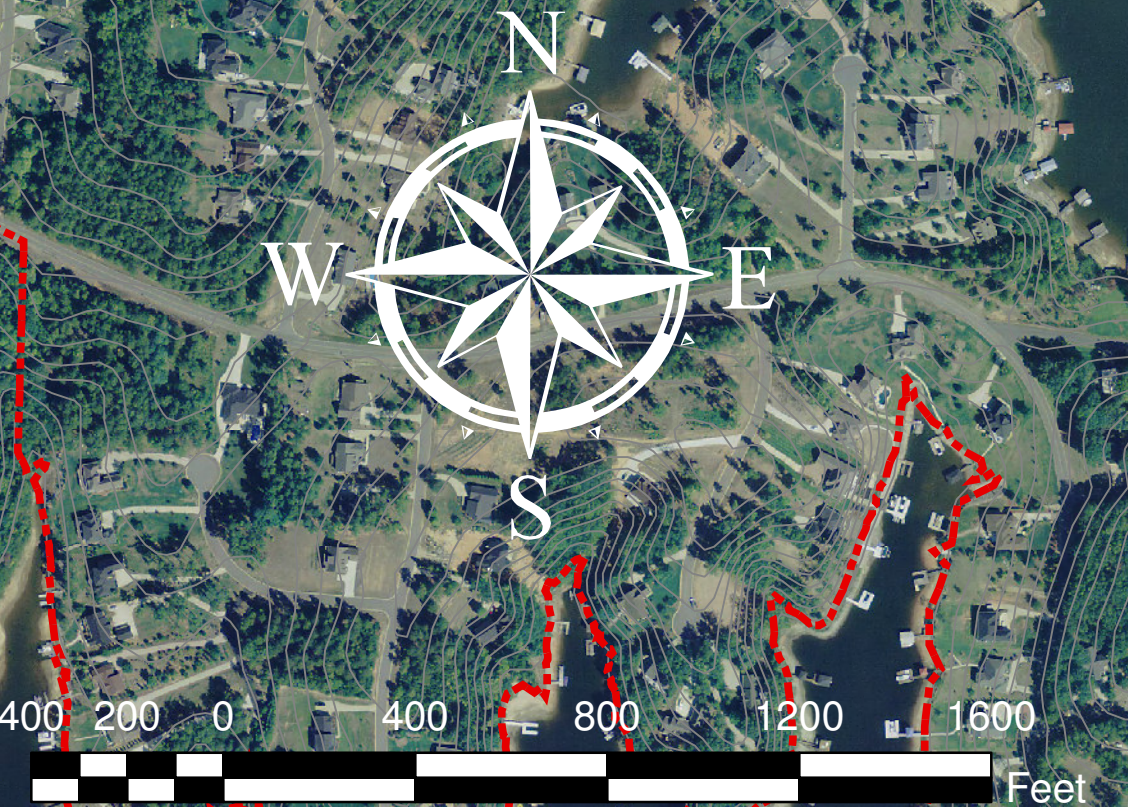
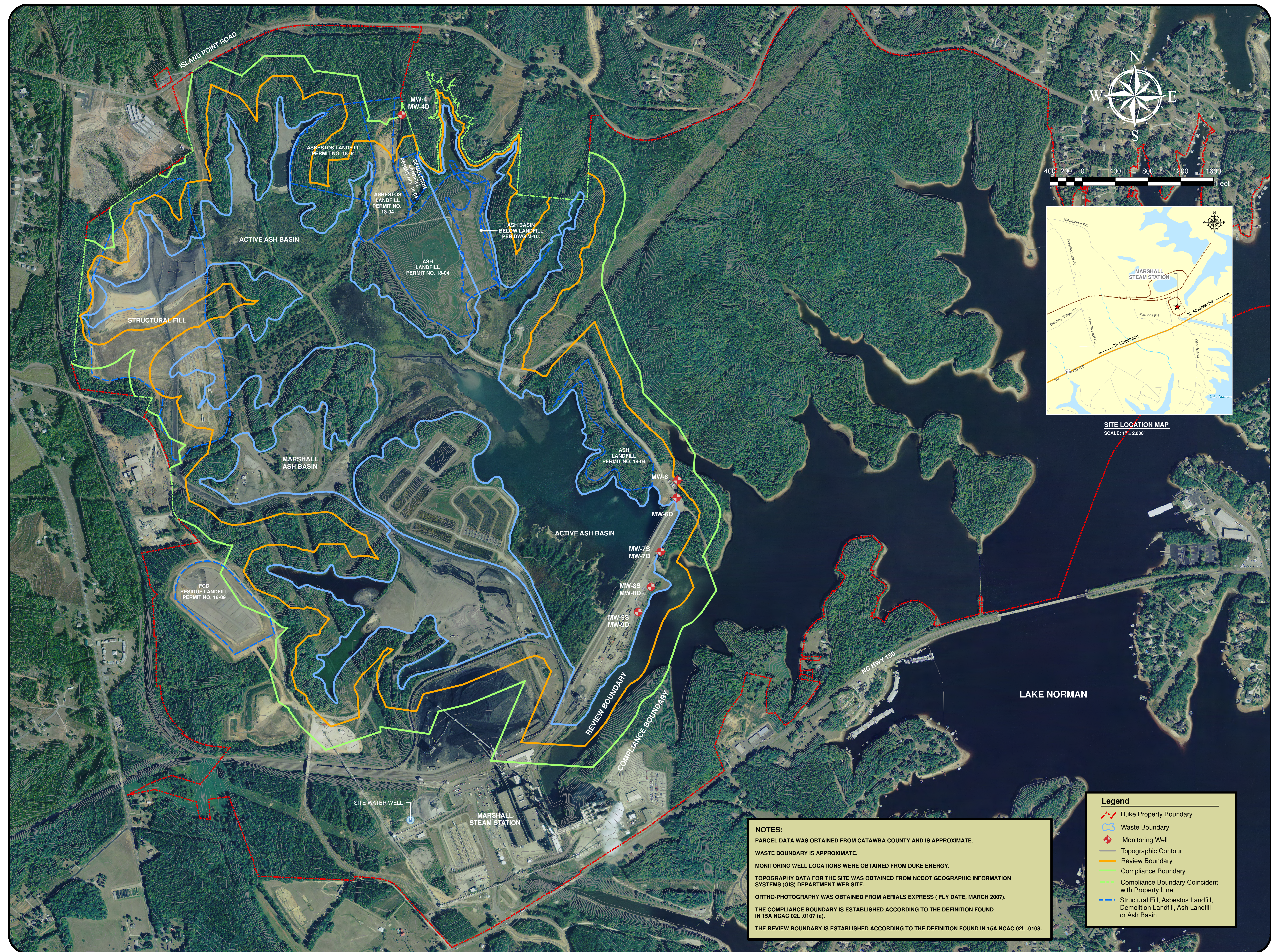
MONITORING WELL LOCATIONS PROVIDED BY DUKE.

TOPOGRAPHY DATA FOR THE SITE WAS OBTAINED FROM NCDOT GEOGRAPHIC INFORMATION SYSTEMS (GIS) DEPARTMENT WEB SITE.

ORTHO-PHOTOGRAPHY WAS OBTAINED FROM NC ONEMAP (FLY DATE, 2007).

THE COMPLIANCE BOUNDARY IS ESTABLISHED ACCORDING TO THE DEFINITION FOUND IN 15A NCAC 02L .0107 (a).

THE REVIEW BOUNDARY IS ESTABLISHED ACCORDING TO THE DEFINITION FOUND IN 15A NCAC 02L .0108.

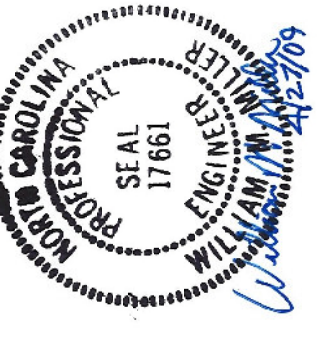


SITE LOCATION MAP
SCALE: 1" = 2,000'

NOTES:
 PARCEL DATA WAS OBTAINED FROM CATAWBA COUNTY AND IS APPROXIMATE.
 WASTE BOUNDARY IS APPROXIMATE.
 MONITORING WELL LOCATIONS WERE OBTAINED FROM DUKE ENERGY.
 TOPOGRAPHY DATA FOR THE SITE WAS OBTAINED FROM NCDOT GEOGRAPHIC INFORMATION SYSTEMS (GIS) DEPARTMENT WEB SITE.
 ORTHO-PHOTOGRAPHY WAS OBTAINED FROM AERIALS EXPRESS (FLY DATE, MARCH 2007).
 THE COMPLIANCE BOUNDARY IS ESTABLISHED ACCORDING TO THE DEFINITION FOUND IN 15A NCAC 02L .0107 (a).
 THE REVIEW BOUNDARY IS ESTABLISHED ACCORDING TO THE DEFINITION FOUND IN 15A NCAC 02L .0108.

Legend

- Duke Property Boundary
- Waste Boundary
- ◆ Monitoring Well
- Topographic Contour
- Review Boundary
- Compliance Boundary
- Compliance Boundary Coincident with Property Line
- Structural Fill, Asbestos Landfill, Demolition Landfill, Ash Landfill or Ash Basin



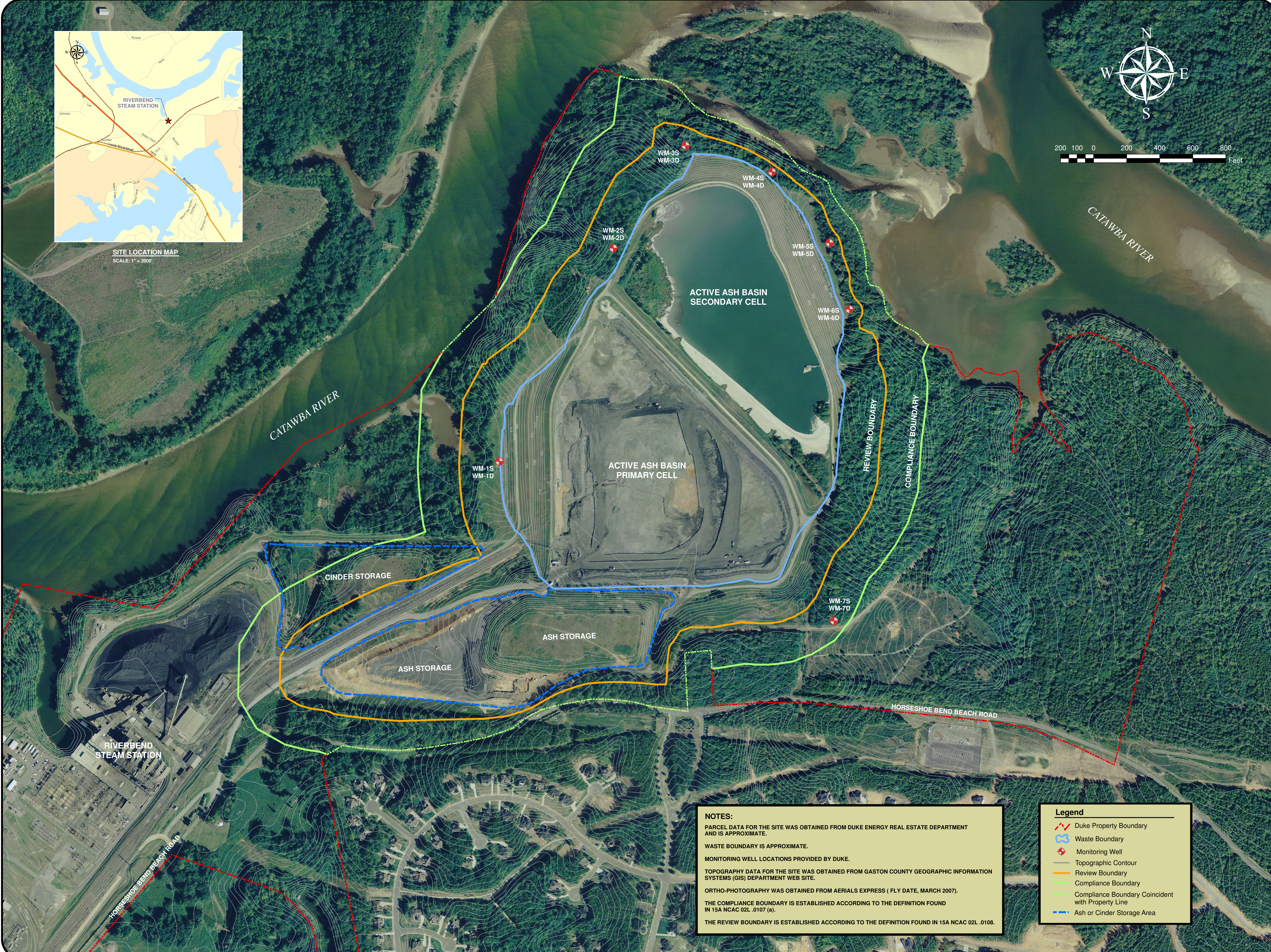
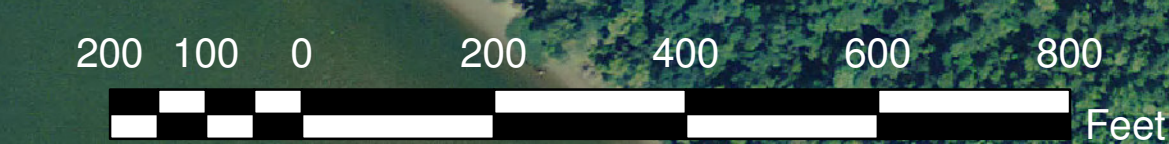
NO.	DATE	DESCRIPTION	BY
0	04/27/2009	RELEASED FOR SUBMITTAL TO INCDENR	WMM

MARSHALL ASH BASIN
NPDES PERMIT NC0004987
WASTE, REVIEW, AND COMPLIANCE BOUNDARY
DUKE ENERGY - MARSHALL STEAM STATION
CATAWBA COUNTY, NORTH CAROLINA

DRAWN BY:	CHECKED BY:
R. POWERS	WMM
DESIGNED BY:	APPROVED BY:
LTA	LTA
PROJECT NO:	DATE:
1411-08-092	04/27/2009
SCALE:	DATE:
1"=400'	04/27/2009
DRAWING:	CR:
1	1



SITE LOCATION MAP
SCALE: 1" = 2000'



NO.	DATE	DESCRIPTION	BY
0	04/27/2009	RELEASED FOR SUBMITTAL TO INCENR	WMM

RIVERBEND ASH BASIN
NPDES PERMIT NC0004961
WASTE, REVIEW, AND COMPLIANCE BOUNDARY
DUKE ENERGY - RIVERBEND STEAM STATION
GASTON COUNTY, NORTH CAROLINA

DRAWN BY: R. POWERS	CHECKED BY: WMM
DESIGNED BY: LTA	APPROVED BY: LTA
PROJECT NO: 1411-08-092	DATE: 04/27/2009
SCALE: 1"=200'	DATE: 04/27/2009
DRAWING: 1	OF: 1

NOTES:
 PARCEL DATA FOR THE SITE WAS OBTAINED FROM DUKE ENERGY REAL ESTATE DEPARTMENT AND IS APPROXIMATE.
 WASTE BOUNDARY IS APPROXIMATE.
 MONITORING WELL LOCATIONS PROVIDED BY DUKE.
 TOPOGRAPHY DATA FOR THE SITE WAS OBTAINED FROM GASTON COUNTY GEOGRAPHIC INFORMATION SYSTEMS (GIS) DEPARTMENT WEB SITE.
 ORTHO-PHOTOGRAPHY WAS OBTAINED FROM AERIALS EXPRESS (FLY DATE, MARCH 2007).
 THE COMPLIANCE BOUNDARY IS ESTABLISHED ACCORDING TO THE DEFINITION FOUND IN 15A NCAC 02L .0107 (a).
 THE REVIEW BOUNDARY IS ESTABLISHED ACCORDING TO THE DEFINITION FOUND IN 15A NCAC 02L .0108.

Legend

- Duke Property Boundary
- Waste Boundary
- Monitoring Well
- Topographic Contour
- Review Boundary
- Compliance Boundary
- Compliance Boundary Coincident with Property Line
- Ash or Cinder Storage Area